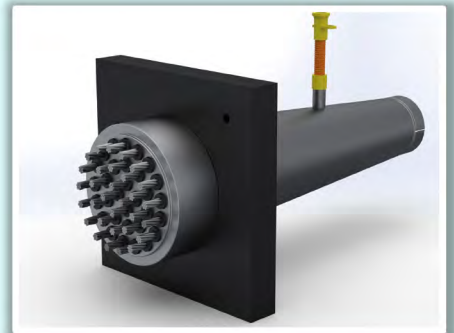
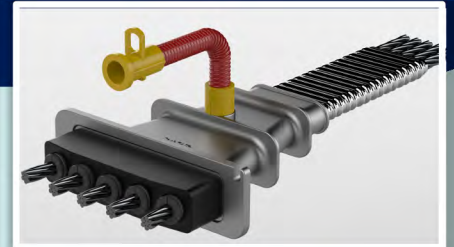


SARE GLOBAL POSTTENSION SYSTEMS

-TECHNICAL DETAILS-



sare[®]
GLOBAL
High quality Turkish brand

DATA SHEET

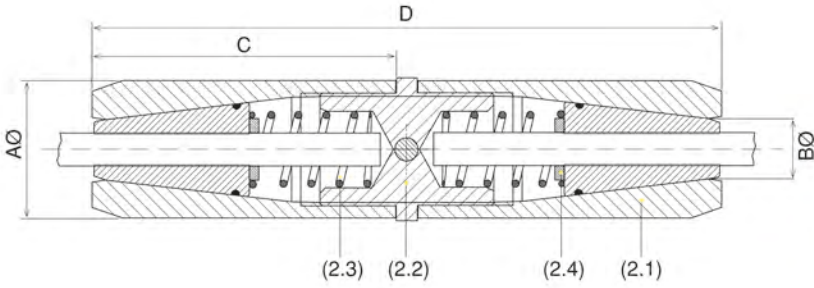
CG SERIES

PRE-TENSION SYSTEMS

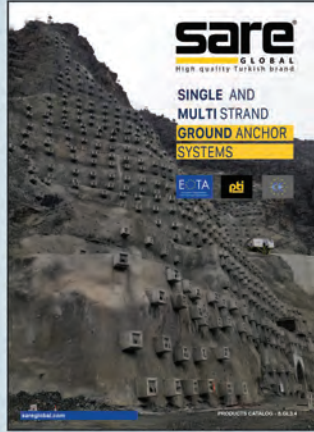
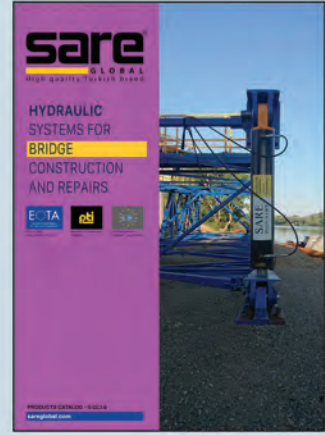


EKLEME ÇENESİ / COUPLER

Önerilen Çap Aralığı Especially Recommended for Prestressing Steel Diameter	0,5"	0,6"	0,62"
	12,70 mm	15,24 mm	15,75 mm
Uygun Grip Tipi / Suitable Wedge Type	Pretensioning Wedge; Nu.D / WPR		
Uygun Grip Uzunluğu / Possible Wedge Length	47 mm		
Maksimum Çalışma Yüğü / Maximum Service Load	160 - 220 kN		
Çalışma Yüğü Üst Limiti / Ultimate Load	230 - 330 kN		
Paket Miktarı / Package - Quantity	4 Adet / Pcs		
Paket Boyutları / Package - Dimensions	250 x 250 x 75 (mm)		
Sipariş Numarası (Grip Hariç) / Order No. (Without Wedges)	CG.07.2.00		
Sipariş Numarası - Kovan (2.1) / Order No. Barrel (2.1)	07.2.01.00		
Sipariş Numarası - Bağlantı Parçası (2.2) Order No. Coupling Piece (2.2)	07.2.02.00		
Sipariş Numarası - Yay (2.3) / Order No. Spring (2.3)	07.2.03.00		
Sipariş Numarası - Arka Plaka (2.4) / Order No. Back Plate (2.4)	07.2.04.00		



Model No.	Diameter Range	Tested Breaking Load	A	B	C	D	Weight
			Ø (mm)	Ø (mm)	(mm)	(mm)	
CG-1	12,2 - 15,8	330 kN	44,5	22,5	88	188	1398 g



sare[®]
G L O B A L
 High Quality Turkish Brand

Merkez Mah. Çavuşbaşı Cad. No.42 D.5-8 Çekmeköy 34782 İstanbul - Türkiye
 P: +90 216 313 11 13 pbx
 info@sareglobal.com • www.sareglobal.com

